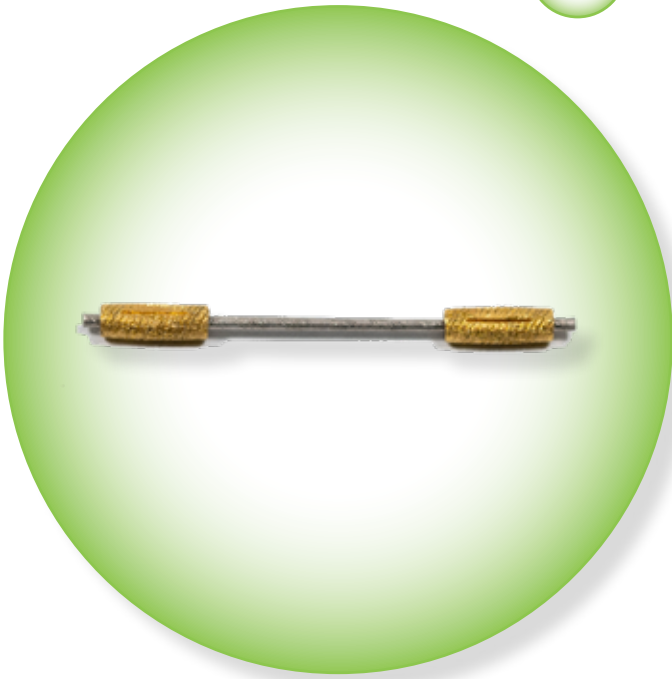


# IOS

INNOVATIVE ONCOLOGY  
SOLUTIONS

## PRODUCT CATALOG

Version 2.0



## Innovative Oncology Solutions

---

IOS was founded in 2016 by a group of medical sales, quality, and supply chain executives with over 40 years' experience in the fields of oncology and medical device. Engineers and physicists by background, our mission is to bring high-quality, reasonably priced products and services to patients and clinicians that solve unique clinical problems and make their lives better.

At IOS, we dedicate the vast majority of our resources to acquiring quality products and getting them to our customers as quickly and efficiently as possible. The products we select to represent undergo a rigorous evaluation process, ensuring only the highest quality products that solve real problems reach our customers.

If we cannot meet your needs, we will tell you who can. That is our promise to you.

*Modern*  
*Classic*

# Table of Contents

---

|  |    |
|--|----|
| Vision and Innovation                                    | 2  |
| Thermoplastics   |    |
| Non-Stick, White Thermoplastics                          | 4  |
| Serenity Series Soft Pull, Blue Non-Stick Thermoplastics | 6  |
| Serenity Series Orfit-Style Masks                        | 7  |
| Brainlab-Style SRS Thermoplastics                        | 9  |
| Head & Neck Positioning & Immobilization                 |    |
| MoldCare Cushions  | 10 |
| Contour Series Silverman-Style Headrests                 | 10 |
| Contour Series CF Silverman-Style Headrests              | 11 |
| Contour Series S-Type Overlay                            | 11 |
| Contour Series U-Frame Baseplate                         | 11 |
| Prone & Supine Positioning                               |    |
| Contour Series Bellyboard                                | 12 |
| Contour Series AirFoil Baseplate                         | 12 |
| Vacuum Cushions  |    |
| Indexed Rectangular Vacuum Cushions                      | 13 |
| Non-Indexed Rectangular Vacuum Cushions                  | 13 |
| Non-Rectangular Vacuum Cushions                          | 13 |
| Vacuum Cushion Accessories                               |    |
| Vacuum Cushion Positioners                               | 14 |
| Carbon-Fiber and Aluminum Lock Bars                      | 14 |
| Other Vacuum Cushion Accessories                         | 15 |
| Fiducial Markers   |    |
| FlexiMarc G/T™ Fiducial Markers                          | 16 |
| BiomarC Fiducial Markers                                 | 17 |
| Stranded and Traditional Fiducial Markers                | 19 |
| Bolus  |    |
| ClearSight Bolus   | 20 |
| Thermoplastic Sheet Bolus                                | 21 |
| Brass Mesh Bolus   | 21 |
| SureMark Precision Skin Marking Systems                  | 22 |

# Thermoplastics

## Non-Stick White Thermoplastics

Tired of thermoplastic masks that stick to latex gloves, MoldCare cushions, hair, clothing, intubation/tracheotomy tubes, headrests, etc.? IOS's non-stick thermoplastic masks are the perfect marriage of innovation and cost-efficiency. Made from state-of-the-art thermoplastic infused with a proprietary non-stick coating, our masks have the following attributes:

- 100% non-stick
- Low bath temperature (149-158 degrees F)
- Cost-effective
- Low shrinkage
- Excellent frame rigidity
- Fast setting time

### Non-Stick White S-Type

#### Claustrophobic & Open-Faced

|                           |   |
|---------------------------|---|
| RF-F103-3004B             | 3.0mm head, neck, and shoulders s-type reinforced claustrophobic mask               |
| RF-F103-3016B             | 3.0mm head, neck, and shoulders s-type non-reinforced claustrophobic mask           |
| <b>New!</b> RF-F103-3020B | 3.0mm head, neck, and shoulders s-type non-reinforced open neck claustrophobic mask |
| RF-F103-3008B             | 3.0mm head, neck, and shoulders s-type optical guidance open-faced mask             |
| RF-C100-3012B             | 3.0mm head-only s-type optical guidance open-faced mask                             |



#### Reinforced

|               |  |
|---------------|--|
| RF-F103-2004B | 2.4mm head, neck, and shoulders s-type reinforced mask |
| RF-F103-3006B | 3.0mm head, neck, and shoulders s-type reinforced mask |
| RF-C100-2004B | 2.4mm head-only s-type reinforced mask                 |
| RF-C100-3004B | 3.0mm head-only s-type reinforced mask                 |



# Thermoplastics

## Non-Stick White Thermoplastics Continued...

### Standard Perforation

|               |   |
|---------------|---|
| RF-F103-2002B | 2.4mm head, neck, and shoulders standard perforation mask |
| RF-F103-3002B | 3.0mm head, neck, and shoulders standard perforation mask |
| RF-C100-2002B | 2.4mm head-only standard perforation mask                 |
| RF-C100-3002B | 3.0mm head-only standard perforation mask                 |



## Non-Stick White U-Frame Masks

### Claustrophobic & Open-Faced

|               |  |
|---------------|--|
| RF-A100-3004B | 3.0mm U-Frame claustrophobic mask              |
| RF-A100-3008B | 3.0mm U-Frame optical guidance open-faced mask |

visionrt | COMPATIBLE



### Standard Perforation

|          |  |
|----------|--|
| F003B    | 2.4mm U-Frame standard perforation mask                    |
| F005B    | 3.0mm U-Frame standard perforation mask                    |
| F005B-ZU | 3.0mm U-Frame standard perforation wide mask               |
| F023B-ZU | 2.4mm U-Frame standard perforation extended neck wide mask |



# Thermoplastics

## IOS Serenity Series Soft Pull, Blue Non-Stick

IOS’s Serenity Series Soft Pull, Blue Non-Stick Thermoplastic Masks couple the non-stick benefits of IOS’s non-stick white thermoplastics with a new, premium thermoplastic material designed specifically to offer the ultimate in patient comfort with exceptional rigidity and low shrinkage. Available in multiple perforation styles and compatible with most manufacturers’ baseplates, our Serenity Series thermoplastic’s primary focus is the patient experience.

- Extremely moldable material with “memory” expedites forming time
- Fast setting time
- Beautifully conforms to patient’s facial contours, increasing comfort, reproducibility and immobilization
- Ultra-comfortable, drape style mask feels like “liquid latex” when pulled
- Low shrinkage

### Serenity Series Soft Pull, Blue Non-Stick Masks:

#### Claustrophobic

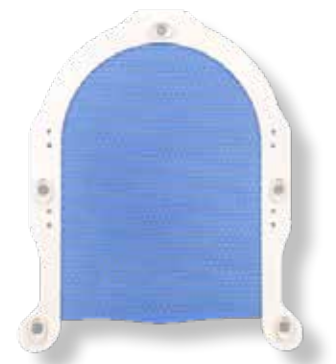
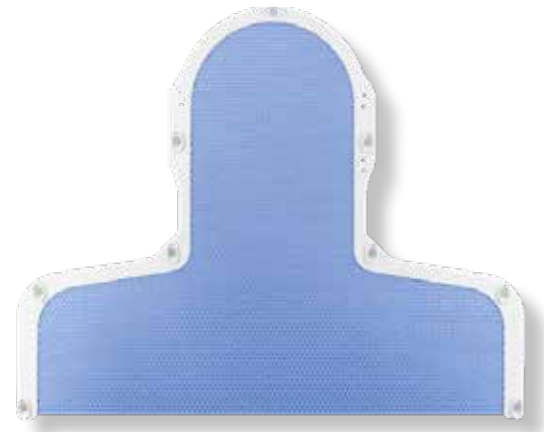
|                |  |
|----------------|--|
| RF-F103B-3003W | 3.0mm head, neck, and shoulders s-type reinforced, claustrophobic mask |
| RF-C103B-3003W | 3.0mm head-only s-type reinforced, claustrophobic mask                 |

#### Reinforced

|                |  |
|----------------|--|
| RF-F103B-3002W | 3.0mm head, neck, and shoulders s-type reinforced mask |
| RF-F103B-2002W | 2.4mm head, neck, and shoulders s-type reinforced mask |
| RF-C103B-3002W | 3.0mm head-only s-type reinforced mask                 |
| RF-C103B-2002W | 2.4mm head-only s-type reinforced mask                 |

#### Standard Perforation

|                |  |
|----------------|--|
| RF-F103B-3001W | 3.0mm head, neck, and shoulders s-type standard perforation mask |
| RF-F103B-2001W | 2.4mm head, neck, and shoulders s-type standard perforation mask |
| RF-C103B-3001W | 3.0mm head-only s-type standard perforation mask                 |
| RF-C103B-2001W | 2.4mm head-only s-type standard perforation mask                 |
| RF-A100B-3001W | 3.0mm U-Frame standard perforation mask                          |
| RF-A100B-2001W | 2.4mm U-Frame standard perforation mask                          |
| RF-A101B-3001W | 3.0mm U-Frame standard perforation mask, wide                    |



## IOS Serenity Series Orfit-Style Masks

The IOS Serenity Series Soft Pull, Blue 3-Point and 5-Point Orfit-Style masks are composed of a new, premium thermoplastic material designed specifically to offer the ultimate in patient comfort with exceptional rigidity and extremely low shrinkage. Available in multiple perforation styles and compatible with Orfit-Style Baseplates, our Serenity Series blue thermoplastic's primary focus is

### Key Benefits:

- Extremely moldable material with “memory” expedites forming time
- Ultra-comfortable, drape style mask feels like “liquid latex” when pulled
- Low shrinkage
- Beautifully conforms to patient' s facial contours, increasing comfort, reproducibility and

### Orfit-Style Masks With Nose Hole

#### 3-Point Head

- |                |  |
|----------------|--|
| RF-B062B-2006W | 2.4mm Reinforced Orfit-Style Serenity Series Head Mask, with nose hole           |
| RF-B062B-3004W | 3.0mm Standard Perforation Orfit-Style Serenity Series Head Mask, with nose hole |



#### 5-Point Head & Neck Masks

- |                |   |
|----------------|---|
| RF-E222B-3004W | 3.0mm Standard Perforation Orfit-Style Serenity Series Head & Neck Mask, with nose hole |
|----------------|---|



# Thermoplastics

---

## IOS Serenity Series Orfit-Style Masks Continued...

### Orfit-Style Masks Without Nose Hole

#### 5-Point Head & Neck Masks

|                |  |
|----------------|--|
| RF-E221B-2006W | 2.4mm Reinforced Orfit-Style Serenity Series Head & Neck Mask, without nose hole           |
| RF-E221B-3004W | 3.0mm Standard Perforation Orfit-Style Serenity Series Head & Neck Mask, without nose hole |





## Specialty Thermoplastics

### Brainlab ExacTrac-Style Masks

A common challenge with other Brainlab-style masks is the long (30+ minute) cure time. IOS's Brainlab ExacTrac-Style Stereotactic masks cure in half the time and are a cost-effective, high-quality mask system designed for the Brainlab ExacTrac baseplate.

#### Key Benefits:

- Ultra-fast cure time
- Low shrinkage
- Easy to manipulate and shape
- Cost-effective

|            |   |
|------------|---|
| F705B-SG30 | Brainlab ExacTrac-Style, head, neck, and shoulder mask, set of 10 |
| F706B      | Brainlab ExacTrac-style head mask, set of 5                       |
| F706B-OSG  | Brainlab ExacTrac-style head mask with non-stick back, set of 5   |
| F708B      | Brainlab-Style U-Frame mask, set of 10                            |

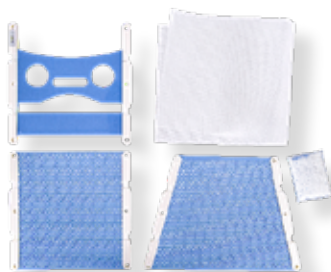


### Brainlab ExacTrac-Style Serenity Series Stereotactic

IOS's Serenity Series Soft Pull Blue Thermoplastic Masks are composed of a new, premium thermoplastic material designed specifically to offer the ultimate in patient comfort with exceptional rigidity and extremely low shrinkage.

Additionally, the Exac-Trac Style Serenity Series has a non-stick coating applied to the patient-facing mask surfaces, helping ensure that the masks do not stick to the patient's hair, beard, etc.

|                |   |
|----------------|---|
| RF-X101B-3001W | Brainlab ExacTrac-Style, head mask (sticky), set of 5 |
|----------------|---|



# Head & Neck Positioning & Immobilization

## MoldCare Custom Head Positioning Cushions

Head & Neck setups using only a Silverman headrest can introduce reproducibility challenges by creating a pivot point between the headrest and the patient's occipital. MoldCare cushions are composed of a soft fabric bag filled with polystyrene beads that are coated in a resin activated by water. When activated, the cushion can be molded to the patient's precise cranial geometry resulting in superior setup reproducibility and patient comfort with or without use of a traditional, rigid headrest.

### Key Benefits:

- Customized to patient's unique cranial geometry
- Increased reproducibility and comfort
- Expedites CBCT matching at treatment setup

|       |  |
|-------|--|
| 93066 | 15cm x 20cm MoldCare Cushion               |
| 93741 | 20cm x 25cm MoldCare Cushion               |
| 94512 | 20cm x 35cm MoldCare Cushion               |
| 95942 | 20cm x 35cm MoldCare Cushion, reduced fill |
| 93742 | 20cm x 45cm MoldCare Cushion               |
| 94521 | S-Type MoldCare Cushion                    |



## IOS Contour Series Silverman-Style Headrests

IOS acrylic Silverman-style headrests are compatible with S-Type and u-frame baseplates as well as most manufacturers' wing boards. Additionally, all IOS Contour Series Silverman headrests have three sets of docking holes, providing flexible sup-inf positioning for patient comfort and setup reproducibility. They can be purchased individually or as a set of six.

|         |  |
|---------|--|
| R-HC6   | S-Type Silverman-Style Headrests, Set of 6 |
| R-HC6-A | S-Type Silverman-Style Headrests, Type A   |
| R-HC6-B | S-Type Silverman-Style Headrests, Type B   |
| R-HC6-C | S-Type Silverman-Style Headrests, Type C   |
| R-HC6-D | S-Type Silverman-Style Headrests, Type D   |
| R-HC6-E | S-Type Silverman-Style Headrests, Type E   |
| R-HC6-F | S-Type Silverman-Style Headrests, Type F   |



# Head & Neck Positioning & Immobilization

## IOS Contour Series Carbon-Fiber Silverman-Style Headrests

A common challenge with classic acrylic Silverman-style head supports is that they tend to break quickly, particularly in the area of the docking holes. Our Carbon-Fiber Silverman-Style S-Type headrests consist of a very thin layer of carbon fiber for low attenuation and the ultimate in durability. Additionally, all IOS Silverman headrests have three sets of docking holes, providing flexible sup-inf positioning for patient comfort and setup

|          |   |
|----------|---|
| R-CHS6   | Carbon Fiber S-Type Silverman-Style Headrests, Set of 6 |
| R-CHS6-A | Carbon Fiber S-Type Silverman-Style Headrests, Type A   |
| R-CHS6-B | Carbon Fiber S-Type Silverman-Style Headrests, Type B   |
| R-CHS6-C | Carbon Fiber S-Type Silverman-Style Headrests, Type C   |



## IOS Contour Series S-Type Overlay

The IOS Contour Series S-Type Head & Neck Overlay solves many of the typical setup challenges seen with other head & neck baseplates.

- Side rulers to aid in laser alignment
- Contoured lumbar area for increased patient comfort
- Ultra low attenuation and lightweight
- Accepts breast thermoplastic

|          |                               |
|----------|-------------------------------|
| MC-CF002 | Carbon Fiber S-Type Baseplate |
|----------|-------------------------------|



## IOS Contour Series U-Frame Baseplate

The IOS Contour Series U-Frame Baseplate is your low attenuation option for whole brain, CyberKnife, and other intracranial treatment setups. The Baseplate accepts standard S-Type headrests, European Posi-style headrests, and TIMO-style headrests (via adapter).

|          |                                |
|----------|--------------------------------|
| MC-BF003 | Carbon Fiber U-Frame Baseplate |
|----------|--------------------------------|



## Prone & Supine Positioning

### IOS Contour Series Bellyboard

The IOS Contour Series Bellyboard is the ultimate prone positioning device for patients undergoing colorectal and other pelvic treatments where small bowel displacement is prescribed. Manufactured from the finest carbon fiber, the Contour Series Bellyboard avoids the reproducibility challenges of other common foam belly boards that may compress differently under the patient’s weight from day-to-day. Side rulers provide additional setup reproducibility, enabling the clinician to easily and quickly align patient and board, reducing the need for large shifts and additional scans after the initial setup CBCT.



Additionally, the Contour Series Bellyboard has a clinically-developed and proven pubic aperture, providing comfort for both male and female patients.

MC-RP002 Contour Series Bellyboard

### IOS Contour Series AirFoil Baseplate

The IOS Carbon Fiber AirFoil Board resolves many of the quality and durability issues of other plastic wing boards on the market today. Constructed of a carbon fiber shell with a foam core for added stability, the IOS Carbon Fiber AirFoil Board has minimal attenuation, especially when combined with our Carbon Fiber S-Type Silverman Headrests. Pair with our chambered wing board cushion for the ultimate in setup reproducibility and patient comfort.



MC-RP002 Contour Series Bellyboard

# Vacuum Cushions

## Vacuum Cushions

### Thicker Membrane + No O-rings = Less Leaks

Tired of your vacuum cushions leaking? IOS Vacuum Cushions are constructed of the highest quality polyamide so they are more rigid and have less propensity to leak.

#### Key Benefits:

- Ultra durable, high-quality polyamide membrane
- No O-Rings
- Adapters available for other manufacturers pumps with CPC connector
- Cost-effective
- Blue color distinguishable in optical imagers
- Easy to clean
- Radio-translucent

#### Indexed Rectangular Vacuum Cushions:

|              |   |
|--------------|---|
| R-E4430-75-2 | 100cm x 70cm vacuum cushion, 30L, indexed |
| R-E4401-75-1 | 70cm x 70cm vacuum cushion, 20L, indexed  |
| R-E4439-75-2 | 100cm x 75cm vacuum cushion, 30L, indexed |
| R-E4543-75-2 | 150cm x 75cm vacuum cushion, 40L, indexed |



#### Non-Indexed Rectangular Vacuum Cushions:

|            |                                  |
|------------|----------------------------------|
| R-E4430-75 | 100cm x 70cm vacuum cushion, 30L |
| R-E4401-75 | 70cm x 70cm vacuum cushion, 20L  |
| R-E4532-75 | 120cm x 80cm vacuum cushion, 32L |
| R-E4480-75 | 100cm x 80cm vacuum cushion, 30L |
| R-E4543-75 | 150cm x 75cm vacuum cushion, 40L |



#### Non-Rectangular Vacuum Cushions:

|            |  |
|------------|--|
| R-E4502-75 | 110cm x 55cm wing board breast cushion, 15L, chambered         |
| R-E4531-75 | 125cm x 110cm T-shaped vacuum cushion, 31L, chambered, indexed |
| R-E4503-55 | 110cm x 55cm Wing board breast cushion, 17L, no chambers       |



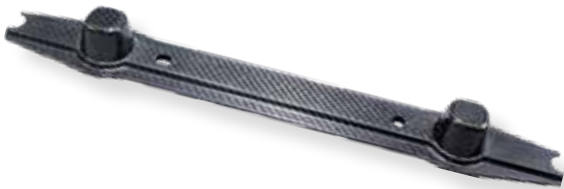
# Vacuum Cushion Accessories

## Vacuum Cushion Positioners

The IOS Vacuum Positioners, particularly when combined with our carbon fiber lock bars, allow the user to easily position the patient on the vacuum cushion without the use of an internal indexing system.

The IOS Vacuum Cushion Positioners are manufactured of the highest quality carbon fiber, providing durable, radio-translucent vacuum cushion indexing for common setups requiring a vacuum cushion.

R-VLC01 Carbon fiber vacuum cushion positioning strip

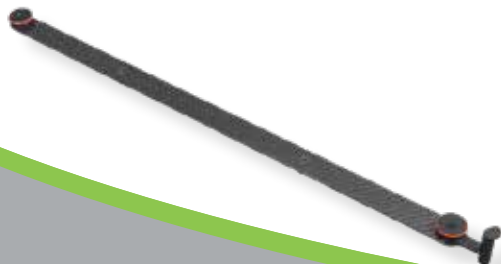


## Carbon-Fiber and Aluminum Lock Bars

IOS lock bars are available in both aluminum and radio-lucent carbon fiber for most manufacturers' couchtops. The IOS lock bars are available fixed or, alternatively, in either transverse (lateral flexibility for increased clearance) and sliding (longitudinal flexibility for positioning larger positioning devices or multi-indexed vacuum cushions).

### Carbon-Fiber and Aluminum Lock Bars:

|             |  |
|-------------|--|
| R-LBV01-5.0 | Lock Bar, Fixed, Aluminum, Varian          |
| R-LBE01-5.0 | Lock Bar, Fixed, Aluminum, Elekta          |
| R-LBV03-3.3 | Lock Bar, Fixed, Carbon Fiber, Varian      |
| R-LBE02-3.3 | Lock Bar, Fixed, Carbon Fiber, Elekta      |
| R-LBV12-5.0 | Lock Bar, Transverse, Carbon Fiber, Varian |
| R-LBE12-5.0 | Lock Bar, Transverse, Carbon Fiber, Elekta |
| R-LBC02-5.0 | Lock Bar, Sliding, Carbon Fiber            |
| R-LBC06-5.0 | Lock Bar, Transverse/Sliding, Carbon Fiber |



# Vacuum Cushion Accessories cont.

## Z-Rack Vacuum Cushion Storage Rack

The IOS Vacuum Cushion Z-Rack is a commercial grade vacuum cushion storage system. Constructed with 1.25" stainless steel, the IOS Z-Rack is extremely durable and will stand the test of time. Also, it's Z-shaped construction is inherently stable, enabling full use of the 60.5" storage area while minimizing the propensity to tip like other vacuum cushion storage racks.

IOS\_VacRakZ Heavy- Duty Commercial Grade Vacuum Cushion Rack



## Vacuum Cushion S-Hooks

Our stainless steel vacuum cushion S-Hooks are designed for maximum durability.

VL\_Hook\_10 Stainless Steel S-hooks for vacuum cushions, Qty 10



## Sani-Cloth Wipes

- Alcohol Free
- Usable on ClearSight Bolus and other clinical surfaces

IOS-SCHB Sani-Cloth HB Alcohol-Free Surface Disinfectant Germicidal Cloth Wipes (160)



# Specialty Fiducial Markers

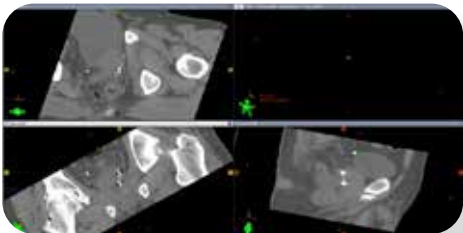
## FlexiMarc G/T™

The FlexiMarc G/T™ combines two 1.2mm x 3mm knurled gold nodes separated by a thin, medical grade titanium connector. Because of titanium’s low density and high magnetic susceptibility relative to gold, the titanium connector is easily visible in MRI while the marker images as two distinct points in kV, CBCT and CT with only one needle insertion. This patented design yields a unique marker that is visible in all pertinent imaging modalities while also trackable in Cyberknife’s Synchrony and Varian’s auto beam hold “ABH” algorithm. The barbell design of the marker also naturally inhibits migration.

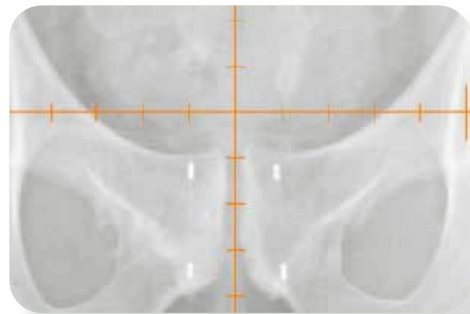
- Easily visible in MRI due to the high magnetic susceptibility of titanium
- Inherently stable barbell design
- Clearly visible in kV, MV, CBCT, CT, MRI, and ultrasound
- 1- or 2cm titanium connector ensures consistent marker spacing and inhibits marker occlusion and migration
- Easily trackable by Accuray Synchrony and Varian ABH



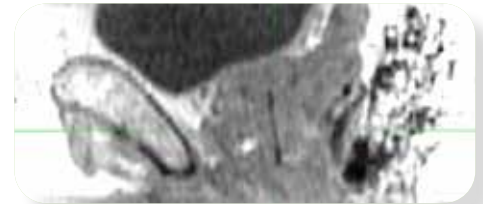
|                      |  |
|----------------------|--|
| FM-1.2-2-20-GT-17-20 | (1) FlexiMarc G/T™ 1.2mm Diameter, 2 Node, <b>20mm spacing</b> , Gold on Titanium, Marker preloaded in a sterile 17 GA by 20cm long Needle |
| FM-1.2-2-10-GT-17-20 | (1) FlexiMarc G/T™ 1.2mm Diameter, 2 Node, <b>10mm spacing</b> , Gold on Titanium, Marker preloaded in a sterile 17 GA by 10cm long Needle |



FlexiMarc G/T™ CT Image



FlexiMarc G/T™ kV Image



FlexiMarc G/T™ MRI Image



# BiomarC Fiducial Markers New!

Standard gold markers tend to overly artifact in CT, can be difficult to see in MRI, and can shadow and perturb the beam making them inappropriate for proton therapy applications. The BiomarC line of fiducial markers consists of a low density zirconium-oxide ceramic core sheathed in a pyrolytic carbon coating. This unique combination provides a marker with the following properties:

- BiomarC is easily visible in MRI due to the superb electric insulating properties of ceramics.
- BiomarC has an extremely low density, dramatically reducing CT artifact and beam perturbation.
- BiomarC has the exceptional biocompatibility of carbon.



BiomarC in kV OBI



BiomarC in CT



BiomarC in MRI



The BiomarC Enhanced marker is designed for clinicians who like the low artifact attributes of the BiomarC with enhanced visibility on MRI. Useful in proton and photon environments, it provides a superior reference for MRI image fusion. The BiomarC Enh is visible in kV, CT, CBCI, ultrasound, & MRI.



|        |   |
|--------|---|
| 040119 | BiomarC Enh 1x5mm marker, 18g x 20cm Needle, pouch of 3 |
| 040122 | BiomarC Enh 1x3mm marker, 18g x 20cm Needle, pouch of 3 |
| 040132 | BiomarC Enh 1x5mm marker, 18g x 13cm Needle, pouch of 3 |



The legacy BiomarC marker is the least dense marker in the BiomarC line. This marker is suitable for any photon beam application where MV visibility is not needed. The BiomarC is visible in kV, CT, CBCT, ultrasound, & MRI.



|        |   |
|--------|---|
| 040109 | BiomarC Enh 1x3mm marker, 18g x 20cm Needle, pouch of 3 |
|--------|---|

# BiomarC Fiducial Markers



BiomarC PRO was designed for the specific needs of a proton center. This marker exhibits a balanced tradeoff between contrast and artifact along with low perturbation. The BiomarC PRO is visible in kV, CT, CBCT, ultrasound, & MRI.



|        |  |
|--------|--|
| 040137 | BiomarC PRO 1x10mm marker, 18g x 20cm Needle, pouch of 1 |
| 040139 | BiomarC PRO 1x5mm marker, 18g x 20cm Needle, pouch of 1  |



BiomarC EX is manufactured with a higher density ceramic core for situations where a heightened fiducial contrast is preferable such as in MV/EPID images and tracking with Accuray's Synchrony. The BiomarC EX is visible in MV/EPID, MVCT (Tomo), kV, CT, CBCT, ultrasound, & MRI.



|        |  |
|--------|--|
| 040140 | BiomarC EX 1x5mm marker, 18g x 20cm Needle, pouch of 3           |
| 040142 | BiomarC EX 1x5mm marker, individually pouched, box of 10 (loose) |



The BiomarC Secure suture-type marker is designed for unsurpassed accuracy of tumor localization in areas such as breast and ocular melanoma treatments where permanent or semi-permanent marker fixation is desired. The BiomarC Secure is visible in kV, CT, CBCT, ultrasound, & MRI.



|        |  |
|--------|--|
| 040147 | BiomarC Secure 1.7x4.6mm marker, individually pouched, box of 10 (loose) |
|--------|--|

# Stranded and Traditional Fiducial Markers

## Stranded Markers

IOS's stranded fiducial markers consist of two 1.0mm x 3.0mm gold markers separated by a bioabsorbable spacer that naturally adheres to tissue, providing a 2.0cm center-to-center marker spacing. This configuration offers the benefit of two sterile markers preloaded into each 18-gauge needle, yielding a fixed marker spacing perfect for prostate CBCT alignment and motion tracking with less needle sticks for the patient.

- Clearly visible in kV, MV, CBCT, CT and ultrasound
- Spacer ensures consistent marker spacing for easy pre-treatment identification and intrafractional tracking

|                    |  |
|--------------------|--|
| GM0832-SS17-1820_1 | 20cm Sterile Placement Needle, containing 2 Gold Markers separated by a 17mm spacer stranded (20mm center-to-center) |
|--------------------|--|



## Traditional Fiducial Markers

IOS's traditional fiducial markers come preloaded in sterile 17- or 18-gauge needles in a variety of configurations.

### Key Benefits:

- Knurled to prevent migration
- Reasonably priced
- Variety of sizes for all treatment modalities



|                |  |
|----------------|--|
| FM-102-AB-4pk  | 20cm Sterile Placement Needle, (1.0 x 3mm), Gold Marker 4-pack |
| FM-102-AB      | 20cm Sterile Placement Needle, (1.0 x 3mm), Gold Marker 3-pack |
| FM-1.0-3-18-20 | 20cm Sterile Placement Needle (1.0 x 3mm), Gold Marker 1-pack  |

|               |  |
|---------------|--|
| FM-102-AJ-4PK | 20cm Sterile Placement Needle, (1.2 x 3mm), Gold Marker 4-pack |
| FM-102-AJ     | 20cm Sterile Placement Needle, (1.2 x 3mm), Gold Marker 3-pack |
| FM-102-JJ     | 20cm Sterile Placement Needle, (1.2 x 3mm), Gold Marker 1-pack |

# Bolus

## ClearSight Bolus

Other manufacturers' bolus solutions have a mustard-yellow color that makes it difficult to see tattoos, positioning lasers, and air bubbles through the material - particularly in dark treatment rooms. IOS's new ClearSight Bolus is crystal clear enabling faster, easier setups than traditional bolus materials.

### Key Benefits:

- 100% transparent so tattoos, lasers, and air gaps are visible
- Inherently adherent to surface for greater conformity to body contours
- Able to cut with scissors
- Can be layered for custom thickness
- Free of PVC and phthalate plasticizers

|                        |   |
|------------------------|---|
| B-03-18-03             | 0.34cm (equivalent to 0.3cm water) thickness reusable, non-sterile, polymer gel bolus sheet (Qty 3)               |
| B-03-18-03-15PK        | 0.34cm (equivalent to 0.3cm water) thickness reusable, non-sterile, polymer gel bolus sheet (Qty 15)              |
| B-05-18-01             | 0.57cm (equivalent to 0.5cm water) thickness reusable, non-sterile, polymer gel bolus sheet (Qty 1)               |
| B-05-01-5PK            | 0.57cm (equivalent to 0.5cm water) thickness reusable, non-sterile, polymer gel bolus sheet (Qty 5)               |
| B-11-18-01             | 1.15cm (equivalent to 1.00cm water) thickness reusable, non-sterile, polymer gel bolus sheet (Qty 1)              |
| B-11-18-01-5PK         | 1.15cm (equivalent to 1.00cm water) thickness reusable, non-sterile, polymer gel bolus sheet (Qty 5)              |
| B-23-18-01             | 2.30cm (equivalent to 2.00cm water) thickness reusable, non-sterile, polymer gel bolus sheet (Qty 1)              |
| B-23-18-01-5PK         | 2.30cm (equivalent to 2.00cm water) thickness reusable, non-sterile, polymer gel bolus sheet (Qty 5)              |
| <b>New!</b> B-03-20-03 | 0.34cm (equivalent to 0.3cm water) thickness reusable, non-sterile, polymer gel bolus sheet, 40cm x 40cm (Qty 3)  |
| B-05-20-01             | 0.57cm (equivalent to 0.5cm water) thickness reusable, non-sterile, polymer gel bolus sheet, 40cm x 40cm (Qty 1)  |
| B-11-20-01             | 1.15cm (equivalent to 1.00cm water) thickness reusable, non-sterile, polymer gel bolus sheet, 40cm x 40cm (Qty 1) |

visionrt | COMPATIBLE



## Thermoplastic Sheet Bolus

|       |  |
|-------|--|
| FB209 | 600mm x 450mm Thermoplastic sheet, 2.4mm, non-perforated |
| FB220 | 60mm x 450mm Thermoplastic sheet, 3.0mm, non-perforated  |



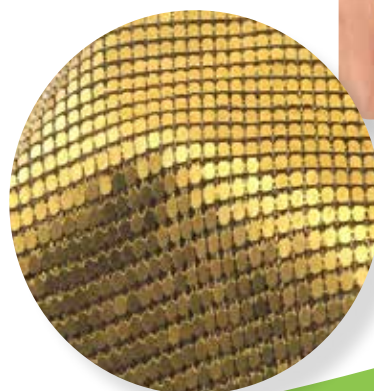
## Brass Mesh Bolus

The ultimate in conformity, brass mesh bolus is great for use for post-mastectomy chest walls using 4MV or 6MV photons. It is reusable, but must be cleaned and sterilized before each use.

### Key Benefits:

- Highly conforming
- Reusable
- Minimizes air gaps

|            |                                      |
|------------|--------------------------------------|
| IOS-4050-B | Brass Mesh Bolus Sheet (40cm x 50cm) |
|------------|--------------------------------------|



# SureMark Precision Skin Marking Systems

## SureMark Precision Skin Marking Systems

SureMark latex-free precision skin marking products provide multiple options for identifying CT zero slice, scar tissue, field borders, tangents, sarcomas, breast tissue, and moles. Available in metallic and non-metallic options, there is a SureMark marker for virtually every application.

### SureMark and SureMark Wire

The most common style for general use, SureMark labels are perfect for distinguishing between a nipple shadow and lesion, thereby reducing costly repeat examinations.



SureMark Ball



SureMark Wire

- SL-15 SureMark BB, 1.5mm diameter (110)
- SL-20 SureMark BB, 2.0mm diameter (110)
- SL-W3 SureMark 0.3mm x 336cm marking wire
- SL-W4 SureMark 0.4mm x 336cm marking wire
- SL-W8 SureMark 0.8mm x 336cm marking wire

### PortalMark Temporary Mark Covers w/ Crosshairs



- PM-400 PortalMark Temporary Mark Covers w/ Set Up Points (110)



- PM-450 PortalMark Temporary Mark Covers w/ Set Up Points, Darker Skin (110)

# SureMark Precision Skin Marking Systems

## SureMark Precision Skin Marking Systems continued.....

### VisionMark CT Markers

The VisionMark™ CT is the next generation use skin marker. These specially formulated non-metallic, semi-lucent markers perform consistently and accurately in a variety of applications, reducing read time on CT scans with virtually no artifact.



VisionMark™ Ball

- V-25 VisionMark™ CT non-metallic skin markers, 2.5mm diameter (110)
- V-40 VisionMark™ CT non-metallic skin markers, 4.0mm diameter (110)
- V-50 VisionMark™ CT non-metallic skin markers, 5.0mm diameter (110)

### CT Mark and CT Line

The CT Mark and CT Line have been specifically formulated for CT imaging. This specifically formulated non-metallic material yields a virtually artifact-free opaque marker that is perfect for nearly all CT marking applications.



CT Mark



CT Mark Wire

- CT-23 CT-Mark 2.3mm non-metallic opaque ball on label, 110 per box
- CT-40 CT-Mark 4.0mm non-metallic opaque ball on label, 110 per box
- CT-W10 1.0mm x 300cm non-metallic marker wire for CT
- CT-W20 2.0mm x 300cm non-metallic marker wire for CT
- CT-CR3 1.2cm CT crosshair marker on round label

### ClearMark Mole Marker

ClearMarks are non-metallic, semi-lucent markers made from materials specifically designed to clearly mark moles, entry points, and mass locations, yet light enough to enable clear visibility of all under



ClearMark Mole Marker

- SL-MO Non-metallic semi-lucent mole marker, 110 per box



# IOS

INNOVATIVE ONCOLOGY  
SOLUTIONS

PHONE: 1.800.993.0928

FAX: 1.800.747.6092

WEBSITE: [www.innovativeoncologysolutions.com](http://www.innovativeoncologysolutions.com)

EMAIL: [info@innovativeoncology.com](mailto:info@innovativeoncology.com)  
[orders@innovativeoncology.com](mailto:orders@innovativeoncology.com)